

The BioEconomy Hub – a Place to Grow

Dr. Gerd Unkelbach

19/06/2025 – International Bioeconomy Conference

Since 2012, **BioEconomy e.V.** has been bringing together mainly regional companies and research institutions in the field of the bio-based economy.



Location: Leuna



Network focus: Central Germany

BioEconomy e.V.

Board member



Dr. Joachim Schulze
BioConsulting GmbH



Dr. Gerd Unkelbach
UPM Biochemicals GmbH



Arne Gröngroft
DBFZ



Dr. Patrick Hirsch
Fraunhofer IMWS



Andreas Kretschmer
Greentec Consult GmbH



Uwe Gaudig
Griesemann Engineering GmbH



Dr. Christine Rasche
Fraunhofer IGB



Prof. Markus Pietzsch
MLU Halle-Wittenberg



Martin Naundorf
InfraLeuna GmbH



Prof. Matthias Zscheile
TH Rosenheim

BioEconomy e.V.

Activities



Bringing together research, industry and politics in the field of the bioeconomy.



Organisation of industry meetings and conferences



Policy advice and access to political decision-makers



Initiation and support of **flagship projects**



Projects



House of Transfer



BioEconomy Hub

BioEconomy Hub – The missing piece of the puzzle

BioEconomy Hub The Need



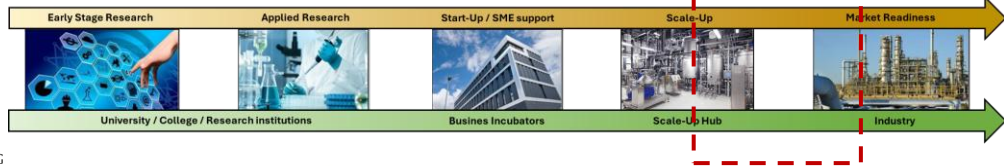
MARTIN-LUTHER
UNIVERSITÄT
HALLE-WITTENBERG



CTC
Center for the
Transformation of Chemistry

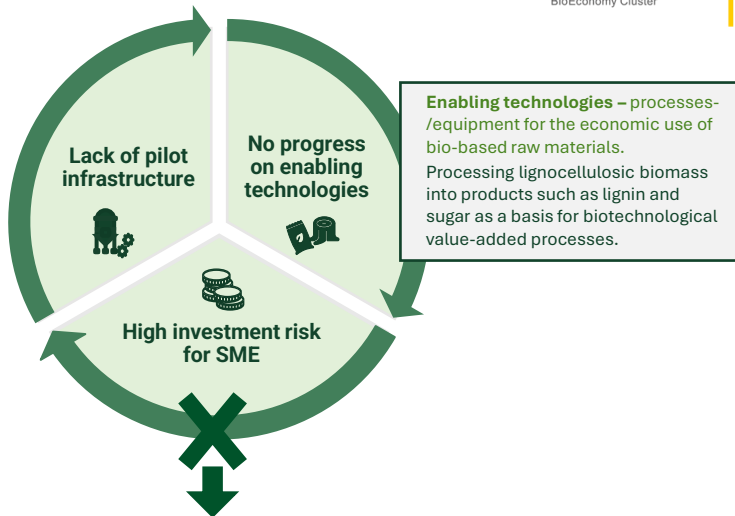


Fraunhofer
CBP



WEINBERG CAMPUS
TECHNOLOGIEPARK

BioEconomy Hub The Need



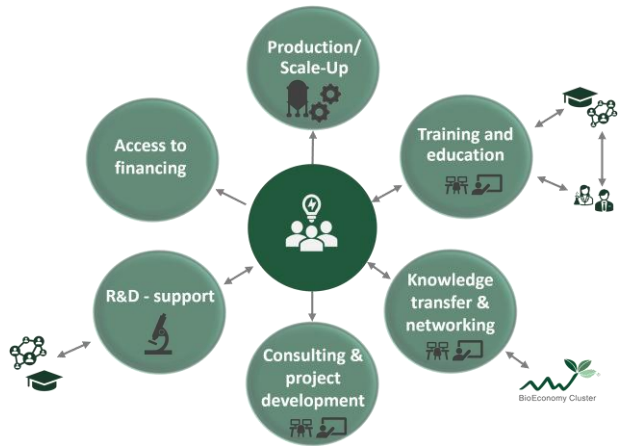
Establishment of a funded pilot infrastructure for a 'shared economy'

BioEconomy Hub

BioEconomy Hub The Concept



= Platform for supporting young companies in the growth phase in the field of bioeconomy



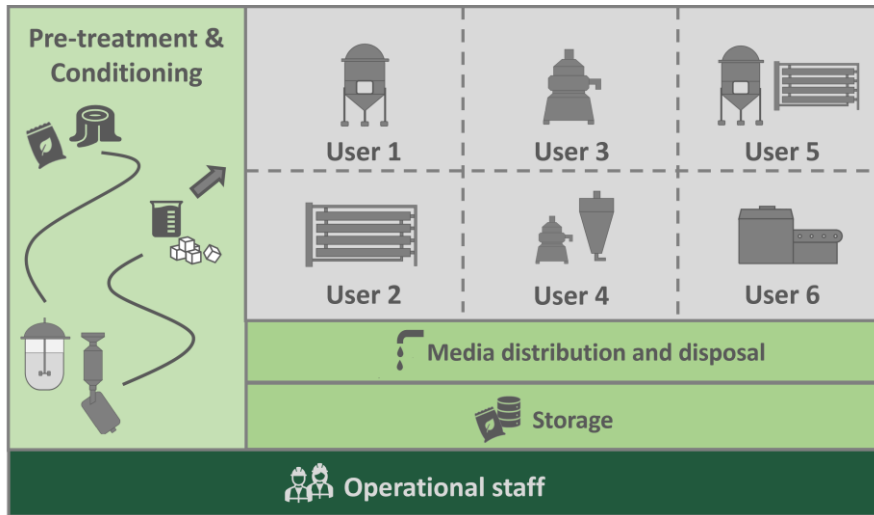


= Platform for supporting young companies in the growth phase in the field of bioeconomy

BioEconomy Hub The Concept

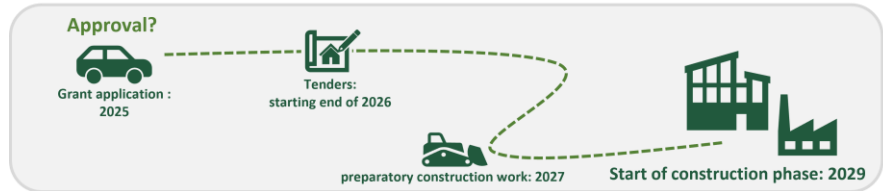


BioEconomy Hub Technical Center



BioEconomy Hub Outlook

ROADMAP



Space for approx. 30 young bioeconomy companies



Permanent Hub employees + Operating team



2000 m² laboratory area for at least 60 people



2000 m² office area for at least 80 people



> 2200 m² Technical centre area 6 separate user modules



Process technology for processing up to 1,000 tonnes of raw biomass



1000 m² storage area



Comprehensive services: including science support

Thank
you!



Dr. Gerd Unkelbach

Gerd.unkelbach@bioeconomy.de
bioeconomy.de

BioEconomy Hub Project Synergie

